

AUSTRALIAN

THE WELLNESS ISSUE

HOUSE & GARDEN

70
years of
AUSTRALIAN
HOMES

TOP
50
ROOMS

Beautiful *ideas* for every
corner of your *home*

**BUILDING
HAPPINESS**

Low-tox, healthy,
sustainable homes

**CLEVER WAYS
WITH MATERIALS**

FROM KITCHENS
TO KIDS' ROOMS

Bath time!
16 of the best

Living well
HOW TO DESIGN, DINE
& DECORATE WITH GOOD
HEALTH IN MIND

TOP 50 ROOMS

20th anniversary



Christopher Elliott

Christopher Elliott Design,
Prahran, Victoria; (03) 9077 8133
or christopherelliottdesign.com.au



Charlotte Coote

Coote&Co, Prahran, Victoria;
(03) 9525 0578 or
cooteandco.com.au



Belinda Nihill

Nest Design Studio, Spring
Gully, Victoria; 0407 422 758
or nestdesignstudio.com.au



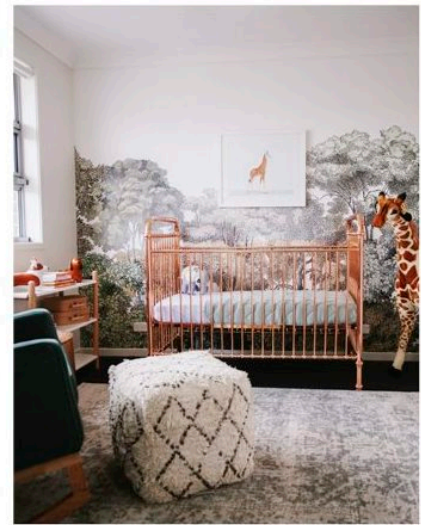
View master

15 From the outset, it was agreed that the view should inform the design of this Melbourne bathroom, so interior designer Christopher Elliott worked closely with landscape designer Nathan Burkett. "Mature trees were planted and will provide privacy and a lovely lush outlook as they grow," says Christopher. "We maximised the view with a generous window and a simple roller blind for privacy." The bathroom's large-format limestone tiles flow right through the home's ground floor. "I wanted the fittings and fixtures to be simple and subtle, and to evoke a sense of serenity," he says. "My view is that bathrooms don't require bling."



Country glamour

16 Honouring the heritage of this 1890s home at Mount Macedon in Victoria was top of mind for interior designer Charlotte Coote. A previous owner's choice of "rhododendron pink" for the dining room, subsequently painted white, was reinstated to create an intimate dining space for entertaining friends and family. Walls and ceiling were finished in high-gloss Resene Glamour Puss, with the ceiling a few shades paler for contrast and to create a sense of height. Calming sisal flooring takes its colour cue from camels in the seating fabric, teamed with restored John Stefanidis curtains. A flamboyant copper and crystal pendant light is the room's crowning glory.



Queen of the jungle

17 "Eyecatching and gender-neutral, with some jungle elements," were interior designer Belinda Nihill's only parameters when designing this Sydney nursery. Beginning with the feature 'Bellewood' mural and rose-gold 'Ellie' cot, Belinda added open storage in blond wood and crisp white – stylish and practical elements that will serve the owners' son from tot to teen. Touches of jungle green, such as the textural 'Caitlin' fabric on the custom rocking chair, enliven the space without overstimulating the senses. "The colours and endless details keep our son entertained and waking up peacefully every morning," says owner Laura. ▶

Room notes 15 Agape 'Normal' bath, Artedomus. 'Pinch' floor-mounted bath outlet, Rogerseller. 'Silhouette' pendant lights, Ross Gardam. 'Hang' stool, Meizai. 'New Grey Tundra' stone tiles, Signorino. 16 Pierre Frey 'Alexandrie' fabric (on chairs), Milgate. Tuscan Arezzo sisal, International Floorcoverings. Resene Glamour Puss, full- and half-strengths. 17 'Bellewood' mural, Rebel Walls. 'Baby Giraffe No.1' print, The Animal Print Shop. 'Ellie' cot, Incy Interiors. Custom rocking chair, Hobbe, with Warwick Fabrics 'Caitlin' upholstery in Forest. 'PS' shelf unit, Ikea. 'Arsuk' rug, Miss Amara.

Photography by Jack Lovel (15), Simon Griffiths (16) & Joyess Images (17).